



# **Multilevel Inverter for Renewable Energy Sources: A Review**

Aboli R. Patil<sup>1</sup>, Prof. P. D. Kulkarni<sup>2</sup>

M. Tech. Student, Department of Electrical Engineering, KCE College of Engineering, Jalgaon(MS), India<sup>1</sup>

M Tech Co-ordinator, Department of Electrical Engineering, KCE College of Engineering, Jalgaon(MS), India<sup>2</sup>

**ABSTRACT:** Nowadays, multilevel inverter technologies have attracted attention as a convenient solution in many industrial applications. There are a few interesting features of using this configuration, where less component count, less switching losses, and improved output voltage/current waveform. The most significant criteria in multilevel inverter is the minimization of harmonic components in the inverter output voltage/current. The evolution of multilevel inverter technologies and the commercial products based on a multilevel inverter topology has shown tremendous developments due to the many advantages. In this paper, a review of the classical multilevel inverters and the recently introduced topologies are presented. They are trending as the most preferable power electronics device that have been widely used in the applications like motor-drive applications up to Megawatts (MW) power levels, renewable energy (solar/wind power inverters) and reactive power compensation (i.e. STATCOM). This paper provides general comparisons for various types of multilevel inverters and their suitable applications with useful references.

**KEYWORDS:** Multilevel Inverter; High-Power Applications; Power Electronics Devices.

## **I.INTRODUCTION**

In recent years, the world is getting industrialized. Several industrial applications require sinusoidal waveforms with minimum distortion at a high power. For medium and high power applications, it is difficult to depend on a single switch. Therefore, the concept of multilevel inverters were introduced in 1974[2]. The basic concept of a multilevel converter is to achieve higher power using power semiconductor switches in combination with several low voltage DC sources and to perform the required power conversion by synthesizing a staircase voltage waveform. It provides flexibility in interfacing capacitors, batteries, or even renewable energy sources such as wind energy, photovoltaic energy and fuel cells as the DC voltage sources. The various combinations of these power switches aggregate the sources. The integral multiple of this forms stepped like voltage waveform of high power at the output side. Subsequently on the basis of this concept, several multilevel converter topologies have been developed [3]-[10]. A multilevel converter has several advantages over the conventional two-level converter that uses high switching frequency pulse width modulation (PWM). These features can be summarized as below [11]:

- a) Staircase waveform quality: Multilevel converter not only can generate the output voltage with very low distortion but also can reduce the dv/dt stresses; therefore the electromagnetic compatibility (EMC) problems can be reduced.
- b) Common-Mode (CM) Voltage: Multilevel converter produce smaller CM voltage; therefore, the stress in the bearings of a motor connected to a multilevel motor drive can be reduced. Furthermore, CM voltage can be eliminated by using advanced modulation strategies such as that proposed in [12].
- c) Input Current: Multilevel converters can draw input current with low distortion.
- d) Switching frequency: Multilevel converters can operate at both fundamental switching frequency and high switching frequency PWM.

The multilevel converters are divided into two based on the number of DC supply sources used as Common DC Source and Separate DC Source, common DC source is further divided into common DC source is further divided into Diode Clamped Multilevel Inverter (DC-MLI) and Flying Capacitor Multilevel Inverter (FC-MLI). The Separate DC Source Multilevel Inverter is commonly known as Cascaded H Bridge Multilevel Inverter (CHB-MLI). It can be of two types with equal DC sources and with unequal DC sources. This has been showcased in fig 1.

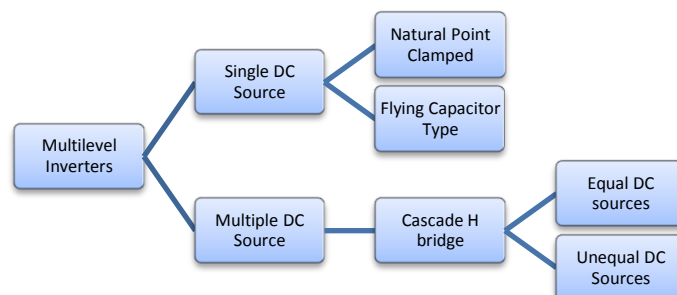


Fig -1: Taxonomy of Multilevel Inverters

This paper is aimed at presenting a comprehensive and detailed investigation about the categories of multilevel inverter topologies available. In addition to this, brief explanations and accounts of various topologies and their applications have been furnished in the paper. This paper is structured in following sections. Section 2 discussed about the technology used in multilevel inverters. Subsequently, in section 3, the description of eight types of multilevel inverter topologies has been discussed. Finally, the conclusion has presented in section 4 of this paper.

## II. MULTILEVEL INVERTER TOPOLOGIES

In recent times, researchers have overcome the multilevel inverter circuit's complexity by switches arrangement which helped in production of a completely new variety of topologies: active NPC (ANPC) multilevel inverter, hybridized cascaded H-bridge (HCHB) multilevel inverter, modular multilevel converter (MMC), switched series/parallel sources (SSPS)-based multilevel inverter and H-bridge and two-level power modules (HBTPM) based multilevel inverter. These topologies are discussed in this paper.

### A. Neutral Point Clamped Multilevel Inverter:

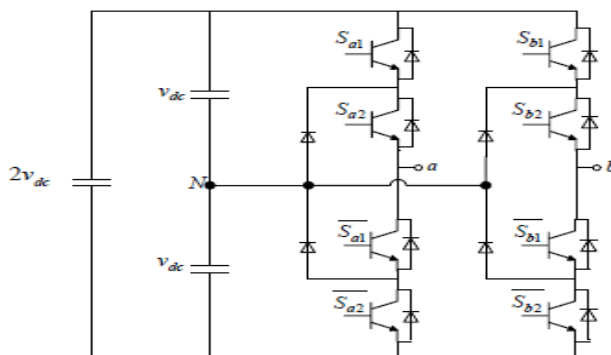


Fig -2: Neutral point clamped multilevel inverter

Neutral point clamped (NPC) inverter was initially introduced in 1981 by Nabae et al. [3]. It was considered as the first type of multilevel inverters, known as the 3-level NPC. Figure 2 shows a single phase 5-level NPC power circuit. It has been constructed by utilizing two traditional inverters of 2-level. One has been fixed over the other for the purpose of stacking. Moreover, two diodes of series-connected have been joined between lower and upper inverter between the neutral mid-points, N. Capacitors assist in splitting the DC bus voltage in two identical phases. Thus, the requirement for having an extra source of DC is invalid in this case. Over the past thirty years, these inverters have commonly been used in industrial applications requiring approximately 6kV. For supporting a higher operating and power voltage, NPC inverter could be stretched and extended to higher levels of voltage. It is fairly easy to extend the scheme to a common n-level conformation and arrangement. Conversely, the use of NPC topology in industrial application is limited to 3-level only because of the series connected capacitors require voltage balancing control.

## International Journal of Advanced Research in Electrical, Electronics and Instrumentation Engineering

(A High Impact Factor, Monthly, Peer Reviewed Journal)

Website: [www.ijareeie.com](http://www.ijareeie.com)

Vol. 8, Issue 8, August 2019

### B. Flying Capacitor Multilevel Inverter:

In mid-1990s, Meynard and Foch [4] and Lavieville et al. [5] introduced flying capacitor (FC) inverter which is considered as another modification of multilevel inverter topology. The basis of this inverter was the usage of capacitors. It is built up by connecting a series of capacitors clamped switching cell. Limited voltages are transferred to electrical devices through capacitors. The switching states in FC inverter are similar to the NPC inverter. However, clamping diodes are not needed for this topology of multilevel inverter. The advantages of these inverters are have redundancy of switching within the phase for balancing the FC. It has the ability to control both reactive and active flows of power. An excellent illustration of half- bridge topology of FC multilevel inverter is shown in Figure 3. The main drawback of the half-bridge of FC inverter is that its output voltages are almost half of the input DC voltage.

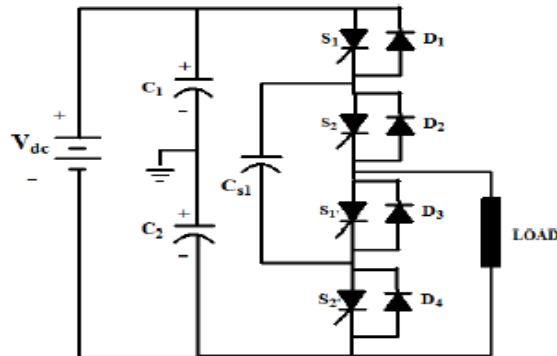


Fig -2: Three level Capacitor clamped MLI

### C. Cascaded H-Bridge Multilevel Inverter:

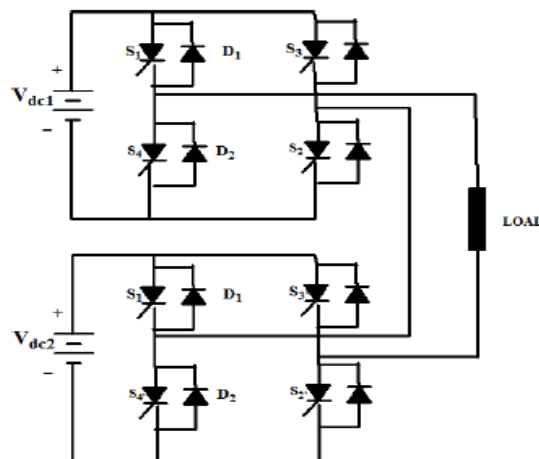


Fig -3: Three level cascaded H-bridge MLI

In the mid of 1970s, Baker and Bannister [6] described the first patent of converter topology which had the ability to produce multilevel voltages through the source of various DC voltage. In this topology, a series of single phase inverters were linked and connected together. The circuits of CHB multilevel inverters have been designed with eight switches consisting of five levels of inverter. Each source of DC is linked with the corresponding H-bridge generating five unique voltage outputs. These outputs vary from  $-2V_{dc}$ ,  $-V_{dc}$ ,  $0$ ,  $+V_{dc}$ , and  $+2V_{dc}$  by utilization of switching combinations of four switches [7]. The series of H-bridge connections synthesize the multilevel inverter output. In cascaded inverter, the number of voltage levels for output phase are calculated through  $n = 2s + 1$ , where,  $s$  is the

## International Journal of Advanced Research in Electrical, Electronics and Instrumentation Engineering

(A High Impact Factor, Monthly, Peer Reviewed Journal)

Website: [www.ijareeie.com](http://www.ijareeie.com)

Vol. 8, Issue 8, August 2019

number of DC sources and  $n$  is the inverter output levels. Figure 4 shows the single phase 5-level CHB multilevel inverter.

### D. Active NPC Multilevel Inverter:

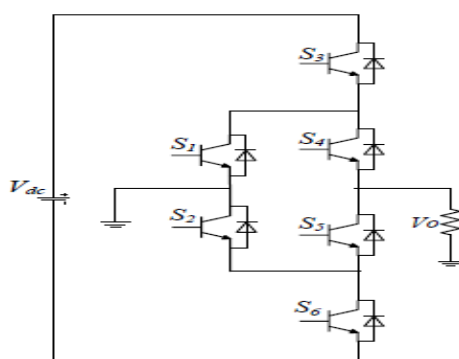


Fig -4: Active NPC Multilevel Inverter

A new multilevel inverter names as active clamped (ANPC) multilevel inverter has presented by Bruckner et al. [8], [9]. It was introduced with the intention of overcoming the inadequate and uneven losses share between outer and inner switched through the placement of power switches instead of normal diodes [10]. The 3-level ANPC inverter is shown in Figure 5. Figure 6 shows the 9-level ANPC multilevel converter which combination of NPC and FC inverter topologies [10]. The number of two-level inverter in this arrangement is obtained by  $(n-1)/2$ , where  $n$  is the inverter output levels. Therefore, there are four two-level inverters were cascaded to obtain a 9-level inverter in each part of this topology. There are three main parts in this type of ANPC multilevel converter. The switches  $S_9$  to  $S_{16}$  and capacitors  $C_4$ ,  $C_5$ ,  $C_6$  are comprised in the first part while, the switches  $S_{17}$  to  $S_{24}$  and capacitors  $C_7$ ,  $C_8$ ,  $C_9$  are comprised in the second part of this inverter. In the third part of this inverter, switches  $S_1$  to  $S_8$  and capacitors  $C_1$ ,  $C_2$ ,  $C_3$  are comprised and it is used to connect the inverter to the load.

### E. Hybridized Cascaded H-Bridge Multilevel Inverter:

A new classification of multilevel inverter was presented by Odeh and Nnadi [11] namely hybridized cascaded H-bridge (HCHB) multilevel inverter. Figure 7 shows a 9-level HCHB multilevel inverter with two DC input voltages. In this kind of inverter topology, nine levels of voltages per cycle are provided by interconnecting of two 5-level hybrid inverter. This type of topology is similar to the CHB topology. The only difference is that in each H-bridge cell, an auxiliary/clamping switch has been added for enhancement of the harmonic profile of waveforms which are attained in the output. In comparison to the traditional CHB inverter, the number of components used in this topology is highly reduced for the similar output voltage level [12]. Keeping into view the switching and operational functions, the benefits of HCHB multilevel inverter are doubled RMS output voltage value, voltage steps quantity and reduction of DC source. The main limitation of this topology is that it cannot be used in the applications where high voltages are required

# International Journal of Advanced Research in Electrical, Electronics and Instrumentation Engineering

(A High Impact Factor, Monthly, Peer Reviewed Journal)

Website: [www.ijareeie.com](http://www.ijareeie.com)

Vol. 8, Issue 8, August 2019

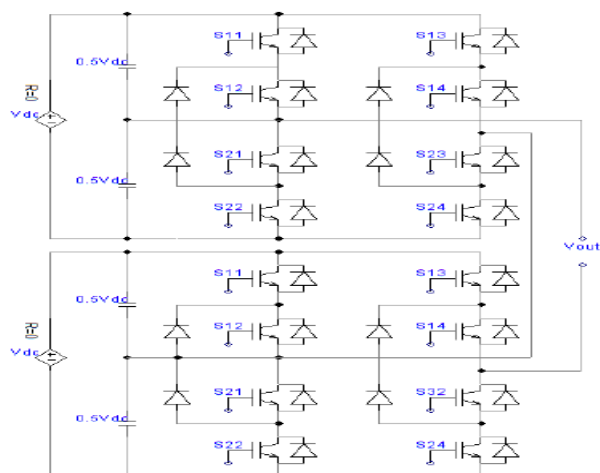


Fig -5: Hybridized Cascaded H-Bridge Multilevel Inverter

## F. Modular Multilevel Converter:

There is another new classification of the multilevel inverter, named as modular multilevel converters (MMC) were presented by Lesnicar and Marquardt in [13]. In comparison to CHB inverter, MMC has a simplified construction and there are various advantages of it. These advantages include redundancy and modular extension to any output level. A single cell of MMC is shown in Figure 8. A single cell of MMC constitutes of two switches with one balancing capacitor. The 9-level MMC topology is illustrated in Figure 9. The connection of 9-level MMC consists of 8 cells which connected by 2 sets of cells in parallel. Each set of cell consists of 4 cells that have a series of connection. In cascaded inverter, the quantity of voltage levels in output phase is similar to cascaded H-bridge inverter which is  $n = 2c + 1$ , where  $n$  is the inverter output levels and  $c$  represents the number of cells connected in this cascaded MMC.

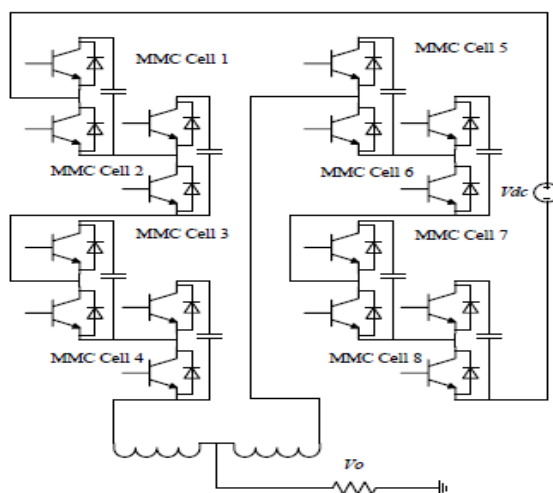


Fig -6: Modular Multilevel Converter

## G. Switched Series/Parallel Sources-based Multilevel Inverter:

Hinago and Koizumi [14] proposed multilevel inverter which consists of DC sources that could be switches in parallel and in series along with the H-bridge. This topology is referred as switched series/parallel sources (SSPS)-based multilevel inverter. For producing the similar levels of output as CHB, the similar number of sources is required by SSPS inverter but will the lesser quantity of switches. Figure 10 shows the aforesaid topology of 9-level SSPS

# International Journal of Advanced Research in Electrical, Electronics and Instrumentation Engineering

(A High Impact Factor, Monthly, Peer Reviewed Journal)

Website: [www.ijareeie.com](http://www.ijareeie.com)

Vol. 8, Issue 8, August 2019

multilevel inverter with four input DC sources, based on two sections. First sections comprise of switched sources and produces bus voltage  $V_{bus}(t)$  and the second section synthesizes negative and positive cycles of voltage  $V_{bus}(t)$  for feeding AC load. The four sources which are  $V_{dc1}$  to  $V_{dc4}$  and power switches  $S1$  to  $S9$  consist in the first part while power switches  $Q1$  to  $Q4$  consist in the second part. An important application suggested is for electric vehicular applications where a single battery composed of a number of series-connected battery cells is available. It can be rearranged using the SSPS topology, hence reducing the requirement of switching devices. More importantly, possibility of combining two or more sources in series and parallel gives enough flexibility for meeting voltage/power requirements in the vehicle drive system.

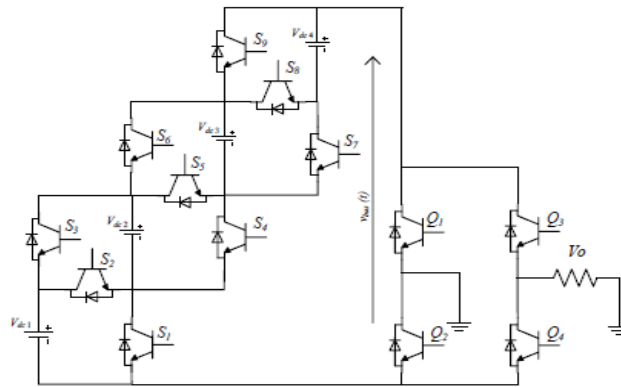


Fig -7: Switched Series/Parallel Sources-based Multilevel Inverter

## H. H-Bridge and Two-level Modules-based Multilevel Inverter:

Suroso and Noguchi [15] introduced a topology of multilevel inverter known as H-bridge and two-level power modules (HBTPM) multilevel inverter. Figure 11 shows the 9-level topology inverter with four input DC sources  $V_{dc1}$  to  $V_{dc4}$ . The terminals with low potentials of sources are interconnected with the help of power switches. Along with this, they are also connected to the high potential terminal of proceeding source through power switches. There are two parts of this topology; one is polarity generation ( $Q1$  to  $Q4$ ) and the other is level generation ( $S1$  to  $S6$ ). Although the structure is simple but it could be seen that there are very limited possibilities of various levels synthesis at bus end. In fact, all the individual level accessible by sources could not be obtained as  $V_{bus}(t)$ , except  $V_{dc1}$ . This is the reason, why no possibilities of asymmetric source configuration are offered by this topology for further reduction of switch count.

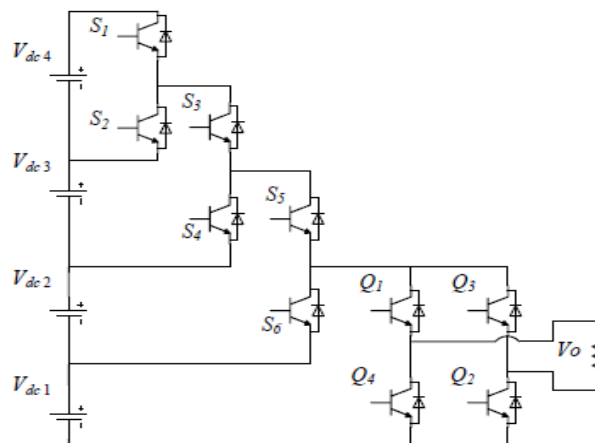


Fig-8: H-Bridge and Two-level Modules-based Multilevel Inverter



# International Journal of Advanced Research in Electrical, Electronics and Instrumentation Engineering

(A High Impact Factor, Monthly, Peer Reviewed Journal)

Website: [www.ijareeie.com](http://www.ijareeie.com)

Vol. 8, Issue 8, August 2019

## III.CONCLUSIONS

With the advancement and development of various industries and sectors at international as well as domestic levels, demands for high energy converters are continuously increasing. It can be said that the multilevel inverters are continued to gain popularity and importance for the applications of low as well as high power. This paper has presented and discussed eight categories of multilevel inverter topologies. Based on the review, conclusion can be done in the process of reducing the power switch count of multilevel inverters, is either by reducing or re-arranging the DC input voltages. Other than that, particular topological explanations and resolutions have been provided by various researchers considering the intended use of application.

## ACKNOWLEDGEMENT

We thank our colleagues from KCE College of Engineering, Jalgaon (MS). Who provided insight and expertise that greatly assisted the research, we thank Srikanth Dakoju and Balraj for sharing their simulation files with MATLAB simulink because of without comparing obtained result of proposed method with their result it's difficult to calculate best part of our design, and Prof. Kulkarny for comments that greatly improved the manuscript. We would also like to show our gratitude to the principal of our college for sharing their pearls of wisdom with us during the course of this research,

## REFERENCES

- [1] Krishna Kumar Gupta, Alekh Ranjan, Pallavee Bhatnagar, Lalit Kumar Sahu and Shailendra Jain: Multilevel Inverter topologies with reduced device count: A Review. IEEE Transactions on Power Electronics ( Volume: 31, Issue: 1, Jan. 2016 )
- [2] Prabaharan N., and Palanisamy K.: Comparative Analysis of Symmetric and Asymmetric Reduced Switch Multilevel Inverter Topology Using Unipolar Pulse Width Modulation Strategies. IET Power Electronics, DOI: 10.1049/iet-pel.2016.0283.
- [3] Prabaharan N., and Palanisamy K.: Investigation of single phase reduced switch count asymmetric multilevel inverter using advanced pulse width modulation Technique. International Journal of Renewable Energy Research, vol. 5, no. 3, pp. 879–890, (2015).
- [4] Prabaharan N., Palanisamy K., and Rini Ann Jerin A.: Asymmetric Multilevel Inverter Structure with Hybrid PWM Strategy. International Journal of Applied Engineering Research, vol. 10, no. 55, pp. 2672- 2676, (2015).
- [5] G. Eason, B. Noble, and I.N. Sneddon, "On certain integrals of Javier pereda, and Juan Dixon, "cascaded multilevel converters: optimal asymmetries and floating capacitor control" IEEE transactions on industrial electronics, vol. 60, no. 11, november 2013.
- [6] M. Mohamad fathi mohamad elias, nasrudin abd. Rahim, hew wooi ping, and mohammad nasir uddin, asymmetrical cascaded multilevel inverter based on transistor-clamped h-bridge power cell IEEE transactions on industry applications, vol. 50, no. 6, november/December 2014.
- [7] Mohammad farhadi kangarlu and ebrahim babaei, a generalized cascaded multilevel inverter using series combination of submultilevel inverters IEEE transactions on power electronics, vol. 28, no. 2, February 2013.
- [8] T. D. Sudhakar; M. Mohana Krishnan; K. N. Srinivas ; R. Raja Prabu Design of a Grid Connected system using PROTEUS software Electrical Energy Systems (ICEES), 2016 3rd International Conference.
- [9] F. H. Khan, L.M. Tolbert, and W. E. Webb, "Hybrid electric vehicle power management solutions based on isolated and non isolated configurations of multilevel modular capacitor clamped converter," IEEE Trans. Ind. Electron., vol. 56, no. 8, pp. 3079–3095, Aug. 2009.
- [10] M. Shen, F.Z. Peng, and L. M. Tolbert, "Multilevel dc-dc power conversion system with multiple dc sources," IEEE Trans. Power Electron., vol. 23, no. 1, pp. 420–426, Jan2008.
- [11] Kritika Rajanwal, Ritu Shakya, Sanskriti Patel, Rakesh Kumar, "Comparative Analysis of PI, PID and Fuzzy Logic Controllers for Speed Control of DC Motor ", International Journal of Engineering Research & Technology (IJERT), Vol. 3 Issue 1, January 2014.
- [12] Xueliang Wei, "Study on Digital PI Control of Current Loop in Active Power Filter ", International Conference on Electrical and Control Engineering, 2010.
- [13] Robert Grino, Ramon Costa Castello, Enric Fossas, "Digital Repetitive Control Of A Single-Phase Current Active Filter, European control conference", 1-3 September 2003, Cambridge, UK.
- [14] Saifullah Khalid, Bharti Dwivedi, V.M.Mishra, "Constant Instantaneous Based controller For a Shunt Active Power under Balanced, Unbalanced and Distortedorted Supply Conditions", International Conference on Computing, Communication and Automation, IEEE 2015.